



LIMELIGHT BUILDING

10350 - 124 STREET, EDMONTON, AB

**1,648 SF FORMER RESTAURANT
SPACE FOR LEASE**

NATHAN RAJU

nathan@beljandevelopment.com

780-994-3454



1,648 SF RESTAURANT SPACE

Don't miss this brand new opportunity to be a part of the vibrant 124 Street community.

The retail space is in excellent condition. Join neighbours Output Technology Campus, Credo Cafe and Bloom Cookies.

AREA	1,648 SF
AVAILABILITY	Immediate
MUNICIPAL	10350 - 124 Street, Edmonton, AB
LEGAL	Plan RN22, Block 32, Lots 19 & 20
ZONING	CB1 - Low Intensity Business Zone
PARKING	Underground parking available
BASIC RENT	Negotiable
OP COSTS	\$12.90/SF (actual 2020)
SIGNAGE	Fascia signage available



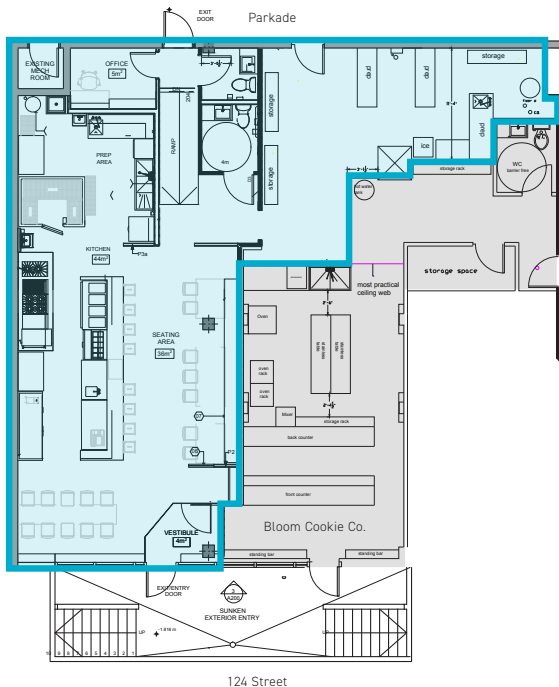
Fully-fitted restaurant space



Located on 124 Street



Ideal for eatery, bar and more



FIND POTENTIAL WHERE NO ONE ELSE EVEN LOOKS



NATHAN RAJU
nathan@beljanddevelopment.com
780-994-3454